



Year 5/6 Meet the Teacher Presentation





St Martin & St Mary School Vision

As a Christian school, St Martin and St Mary is an **inclusive** and **happy** community; nurturing **confidence**, a thirst for **learning** and **resilience** in a **safe, loving** environment.

Our priority is developing the whole child **spiritually**, **emotionally**, **physically** and **academically** to **live the most rewarding life**.

'Life in all its fullness' John 10.10



Friendship

Love

Forgiveness

Trust

Honesty

Faith

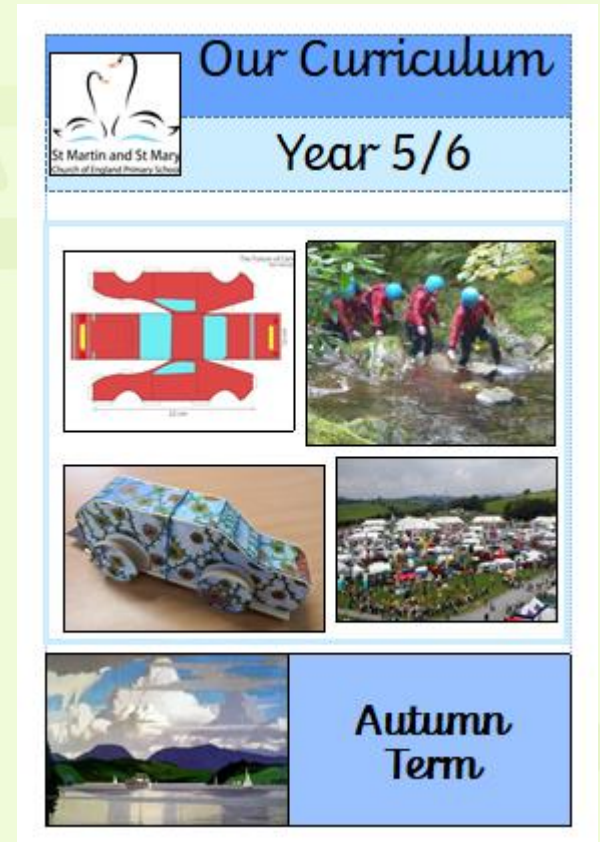


Curriculum

We have an action-packed curriculum where we often teach topics that can be linked to other areas of the curriculum. We hope that this provides a broad and balanced provision.

County Show
School Council Elections
Eco Elves
Global Leaders
Patterdale
Theme Parks
Tenner Project
Habitat Project
Maths Trail
Outdoor Eds
Cars
Kendal Church service

Year 6 Assembly
Leavers' Service
White Fang
Science Investigations
Charles Darwin
Way Home
Mayans
Boosters
Grammar games
Maths games
House/Vice Captains
SATs



Weekly Timetable – Here is an example of a weekly timetable. However, our timetable does alter slightly each week.

Y5/6 PROVISIONAL TIMETABLE AUTUMN TERM 2025

	8.45	9.00	9.30	10.00	10.30	10.50	12.00	12.25	1.25	14.15	3.00	3.15
MONDAY	Morning Task	English		Praise Collective Worship		Morning Break 10:30-10:50	Maths		Y5 PE/Games		Story	
								Y6 Science (RF, NN)	French/Handwriting			
TUESDAY	Morning Task	English		Singing Collective Worship			Lunchtime 12.00-12:55	Maths		History/Geography		Story
WEDNESDAY	Morning Task	English		Whole School Collect Worship				Morning Break 10:30-10:50	Maths		Art	RE
THURSDAY	Morning Task	English		Whole School Collect Worship		Lunchtime 12.00-12:55			Maths		Y6 PE/Games	
									Y5 Science (RF, HW)	French/Handwriting		
FRIDAY	Morning Task	PSHE	English		Maths		Spellings		Homework		Computing/Music	Story



Our Class Ethos

Our Y5/6 Charter

- We must show respect towards everything and everyone.
- Try our best and make sure we do not waste our time or stop others from learning.
- Speak to others respectfully.
- Practise our talents so that we can improve.
- Listen to others' opinions.
- Choose to eat and drink healthily.
- Tidy our things away.
- When peer marking, do it to the best of my ability.
- Take care not to drop litter and pick things up if we do.
- Consider how our opinions will affect others.
- Concentrate, listen to and look at the person speaking to us.

Signed: _____





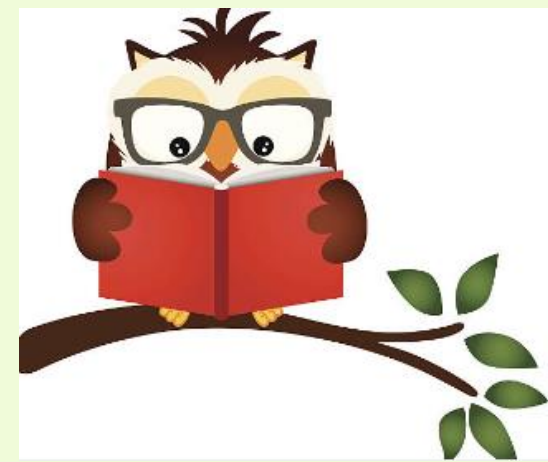
Homework

Weekly homework will include:

- Spellings to learn and practise. These will be given out, handed in and tested on Friday each week.
- Times table practise on Times Table Rockstars (we will monitor usage online).
- A Maths activity. This will be given out on Friday each week and handed in the following Friday.
- An English activity.
- ***If your child is having difficulties completing their homework please encourage them to come and ask for help.***



Homework: Reading



- Children should take their reading book home each day.
- We ask that the children read to someone at home and then have their reading diary signed on **three** different occasions each week.
- In Year 5/6, we also encourage children to enjoy independent reading as often as possible at home.
- Reading diaries will be checked and signed by the class teacher each **Friday**.



PE

- Year 5 PE and Games - **MONDAY**
- Year 6 PE and Games day- **THURSDAY.**

Please name all PE kit including trainers.

New for September 2023 - PE and Games Kit

Children to attend school in their PE kit on PE and Games days.

Essential items

- ✓ Trainers
- ✓ Navy or black shorts, a skirt or leggings.
- ✓ A T-shirt in their house colour

*N.B. We expect all children to wear our agreed school uniform for **PE and Games**. Please don't send children to school in Football Kits and 'Active Wear', aerobics outfits etc.*

Optional extras...

- ✓ Polo shirt
- ✓ Tracksuit - tops and bottoms
- ✓ Hoodie in house team colours
- ✓ Running vest
- ✓ Sports socks
- ✓ Waterproof sports jacket
- ✓ Navy leotard
- ✓ Black gym shorts

For competitions & sports festivals, children will wear the optional PE items. School will loan kit to those children where items have not been purchased.



Trips and Visits

- **Westmorland County Show** – Thursday 11th September.
- **Y5 Patterdale Hall Residential** – 1st to 3rd October.
- **Easedale Tarn Outdoor Ed** – 13th/14th/16th October.
- **Tenner project** – Autumn/Spring terms.
- **Y6 London Residential** – 2nd to 4th March.
- **SATs Week** – Monday 11th May – Thursday 14th May.
- **Loughrigg Outdoor Ed** – June 2026.



After School Clubs

- We have a wide range of different clubs available across school each term.
- Information will be sent home at the beginning of each term and is also available to view on the school website.
- After school clubs are a brilliant way to boost your child's self confidence and well being.



Year 6 SATs Week

- Statutory tests for all primary schools.
- SATs week will be: Monday 11th May – Thursday 14th May.
- We only ever ask that the children try their best and show their best attitude.

1x table	2x table	3x table	4x table	5x table	6x table
0 × 1 = 0	0 × 2 = 0	0 × 3 = 0	0 × 4 = 0	0 × 5 = 0	0 × 6 = 0
1 × 1 = 1	1 × 2 = 2	1 × 3 = 3	1 × 4 = 4	1 × 5 = 5	1 × 6 = 6
2 × 1 = 2	2 × 2 = 4	2 × 3 = 6	2 × 4 = 8	2 × 5 = 10	2 × 6 = 12
3 × 1 = 3	3 × 2 = 6	3 × 3 = 9	3 × 4 = 12	3 × 5 = 15	3 × 6 = 18
4 × 1 = 4	4 × 2 = 8	4 × 3 = 12	4 × 4 = 16	4 × 5 = 20	4 × 6 = 24
5 × 1 = 5	5 × 2 = 10	5 × 3 = 15	5 × 4 = 20	5 × 5 = 25	5 × 6 = 30
6 × 1 = 6	6 × 2 = 12	6 × 3 = 18	6 × 4 = 24	6 × 5 = 30	6 × 6 = 36
7 × 1 = 7	7 × 2 = 14	7 × 3 = 21	7 × 4 = 28	7 × 5 = 35	7 × 6 = 42
8 × 1 = 8	8 × 2 = 16	8 × 3 = 24	8 × 4 = 32	8 × 5 = 40	8 × 6 = 48
9 × 1 = 9	9 × 2 = 18	9 × 3 = 27	9 × 4 = 36	9 × 5 = 45	9 × 6 = 54
10 × 1 = 10	10 × 2 = 20	10 × 3 = 30	10 × 4 = 40	10 × 5 = 50	10 × 6 = 60
11 × 1 = 11	11 × 2 = 22	11 × 3 = 33	11 × 4 = 44	11 × 5 = 55	11 × 6 = 66
12 × 1 = 12	12 × 2 = 24	12 × 3 = 36	12 × 4 = 48	12 × 5 = 60	12 × 6 = 72
7x table	8x table	9x table	10x table	11x table	12x table
0 × 7 = 0	0 × 8 = 0	0 × 9 = 0	0 × 10 = 0	0 × 11 = 0	0 × 12 = 0
1 × 7 = 7	1 × 8 = 8	1 × 9 = 9	1 × 10 = 10	1 × 11 = 11	1 × 12 = 12
2 × 7 = 14	2 × 8 = 16	2 × 9 = 18	2 × 10 = 20	2 × 11 = 22	2 × 12 = 24
3 × 7 = 21	3 × 8 = 24	3 × 9 = 27	3 × 10 = 30	3 × 11 = 33	3 × 12 = 36
4 × 7 = 28	4 × 8 = 32	4 × 9 = 36	4 × 10 = 40	4 × 11 = 44	4 × 12 = 48
5 × 7 = 35	5 × 8 = 40	5 × 9 = 45	5 × 10 = 50	5 × 11 = 55	5 × 12 = 60
6 × 7 = 42	6 × 8 = 48	6 × 9 = 54	6 × 10 = 60	6 × 11 = 66	6 × 12 = 72
7 × 7 = 49	7 × 8 = 56	7 × 9 = 63	7 × 10 = 70	7 × 11 = 77	7 × 12 = 84
8 × 7 = 56	8 × 8 = 64	8 × 9 = 72	8 × 10 = 80	8 × 11 = 88	8 × 12 = 96
9 × 7 = 63	9 × 8 = 72	9 × 9 = 81	9 × 10 = 90	9 × 11 = 99	9 × 12 = 108
10 × 7 = 70	10 × 8 = 80	10 × 9 = 90	10 × 10 = 100	10 × 11 = 110	10 × 12 = 120
11 × 7 = 77	11 × 8 = 88	11 × 9 = 99	11 × 10 = 110	11 × 11 = 121	11 × 12 = 132
12 × 7 = 84	12 × 8 = 96	12 × 9 = 108	12 × 10 = 120	12 × 11 = 132	12 × 12 = 144



Attendance

Here is a visual representation of attendance:



We ask that your child be in school as close to 8:40 as possible, as our learning starts straight away. This is a valuable time we use to recap learning and embed new strategies.



Walking Home and Mobile Phones

- In Year 5/6 some parents feel that their children are old enough to walk home independently. If you feel that this is the case for your child, you must let us know in writing, or by email. Once we have your authorisation, we will allow your child to leave school and walk home without an adult.
- Mobile phones are not allowed in school. However, if you feel that an occasion arises where your child needs a phone with them, you must let us know by email, or via a phone call to the office and your child's phone must be given to the class teacher for safe-keeping. It will be returned at the end of the day.



Online Safety

- We appreciate children enjoy using their phones for communicating or creating videos. However, we ask that you monitor which websites they access and social media platforms they use to communicate.
- Real Love Rocks – Barnardo's, Police talk, PSHE, Digital Wellbeing.
- Incidents that happen outside of school can impact each child and prevent them from reaching their potential.



Online Safety - guidance

Age Restrictions for Social Media Platforms

What is the minimum age for account holders on these social media sites and apps?

Under 13



13+



16+



17+

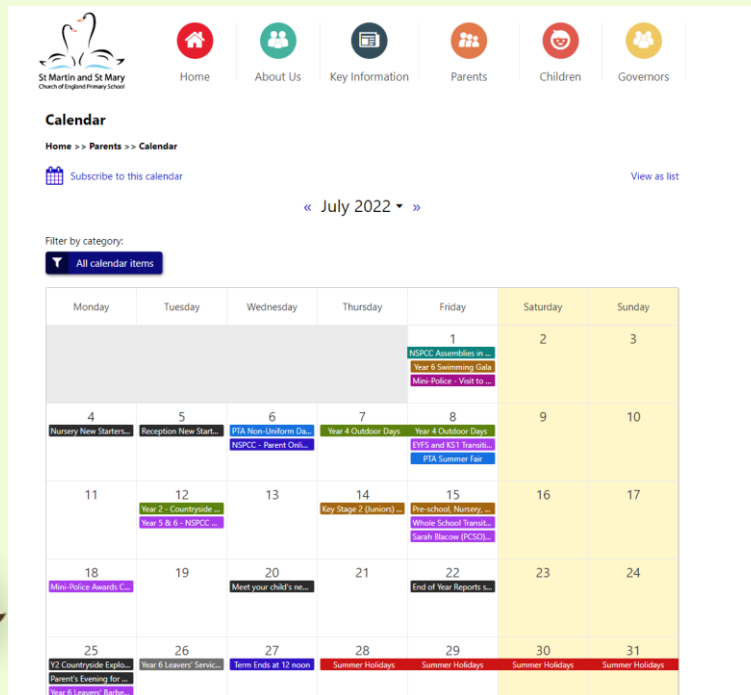


Sourced from NSPCC website October 2019

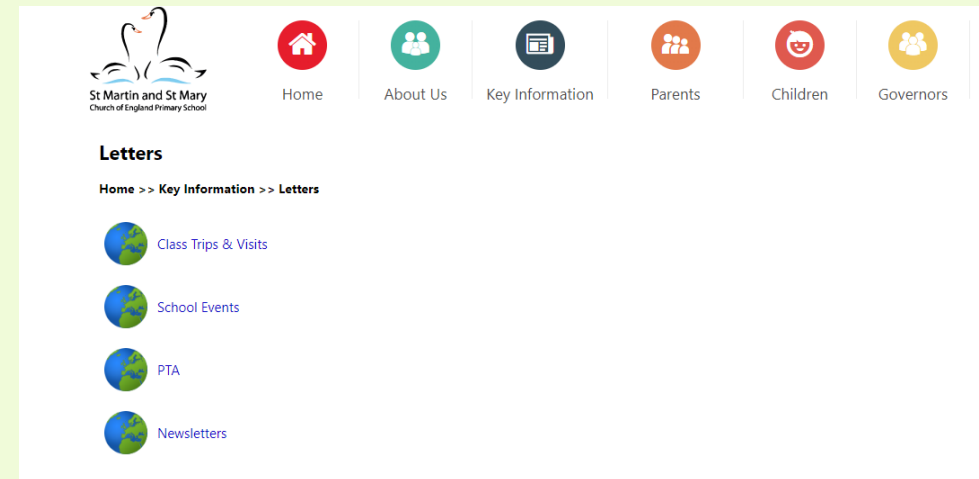


Keeping Up-To-Date

- Please check our website, the school calendar and also follow us on Facebook for weekly updates about things that are happening in school.
- Consent forms and trip letters will be available to download from the school website.



The screenshot shows the school website's navigation menu with icons for Home, About Us, Key Information, Parents, Children, and Governors. Below the menu is the 'Calendar' section, which includes a breadcrumb trail 'Home >> Parents >> Calendar', a 'Subscribe to this calendar' button, and a 'View as list' link. The main content is a calendar for July 2022, with a filter set to 'All calendar items'. The calendar grid shows various events such as 'Nursery New Starters', 'Reception New Starters', 'PTA Non-Uniform Day', 'Year 4 Outdoor Days', 'Year 4 Outdoor Days', 'Year 2 Countryride', 'Year 5 & 6 NSPCC', 'Mini-Police Awards', 'Year 6 Leavers' Service', 'Term Ends at 12 noon', 'Summer Holidays', and 'Summer Holidays'.



The screenshot shows the school website's navigation menu with icons for Home, About Us, Key Information, Parents, Children, and Governors. Below the menu is the 'Letters' section, which includes a breadcrumb trail 'Home >> Key Information >> Letters'. The main content is a list of letter categories: 'Class Trips & Visits', 'School Events', 'PTA', and 'Newsletters', each with a globe icon.



Contacting Teachers

- Email is the best way to get in touch with your child's class teacher.
- Please email during working hours-8.30am-4.30pm Monday to Friday.
- We will respond to emails as quickly as possible but please be aware that we are busy during school hours.

hwhitehead@windermere.cumbria.sch.uk

sbritton@windermere.cumbria.sch.uk

rfoster@windermere.cumbria.sch.uk

nnorris@windermere.cumbria.sch.uk

