

Working together

If your family need to discuss anything with your teacher, please see them at the door in the morning if it is urgent, but after school is a much better time for a chat about any issues. Please feel free to phone the office and they will arrange a call back or a suitable time to meet.



Across Reception we follow our whole school 'Golden Rules' however we call them our 'Busy Bee Rules'.

These rules are in place to help your child learn about the expectations we have across the school. We praise the children when they have followed our busy bee rules by holding a 'Golden Time' session on Friday afternoon.

During our circle time sessions we teach skills that will support the children to think about the consequences of breaking the busy bee rules.

There is a display in each of the classrooms that display the rules alongside the 'Busy Bee Hive'. We refer to the display frequently in the classroom to help the children learn about our expectations.



In September don't forget...

- Named drinks bottle
- Book Bag
- Named Wellies to keep at school
- To come in PE kit on PE days
- Bag with spare clothes and pumps
- * Bring a coat every day

Welcome to Reception



Validated by
Department
for Education



Information for children and families

Arriving at school

The staff will greet you at the classroom door at our start time of 8:45. You can say goodbye to your Parents and then hang your book bags and coats on your own peg in the cloakroom. You can keep your wellies on the rack below your coat. Drinks bottles need to be placed in the drinks bottle area.



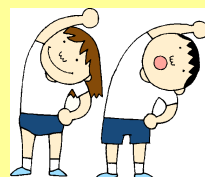
If you arrive late, you will need to go to the main school entrance so that you don't disturb the class & you can sign in at the office.



PE and Outdoor Activities

Reception PE days are as follows:

Tuesday & Thursdays for both classes. For PE you will need either a red, blue, yellow or green t-shirt (depending on your child's house group) and a navy pair of shorts. For indoor PE, we generally work in our bare feet. You will need Velcro trainers for outdoor PE. You may come to school in your trainers and PE kit on your PE days. In cooler Autumn/ winter PE days you may like to dress your child in tracksuit bottoms and a house group coloured jumper/ hoodie.



In Reception we enjoy working outdoors, we love our Forest School activities.

Please can you bring your own wellies to keep at school. You must have a waterproof coat in school at all times for playtimes and outdoor learning.

Please check that all these items are named- this helps us reunite all clothing to its owner!

Learning at School and Home

As a school we understand that children's first educators are parents at home. We try hard to support parents so they can help their children at home. In the Autumn term you will receive more information about our phonics/ reading programme



Please can you support us in helping your child at home. We do expect you to read/ practice the phonics at home at least 4 times a week. Please can you make comments in their home/ school reading record anytime you have read/ played a phonics game etc...This will really help us in class.



Importance of play

Throughout the Foundation Stage play and exploration is the way that young children learn. In all the classrooms in the Foundation Stage you will find areas like; painting, construction, role play, small world, books, computers, outdoor space..... These familiar activities are there for the children to access and the adults in the classes 'enhance' these areas with different resources to structure and extend. Our learning can sometime be messy so pleased don't be surprised if your child returns home a little dirty.



Phonics & Our Approach to

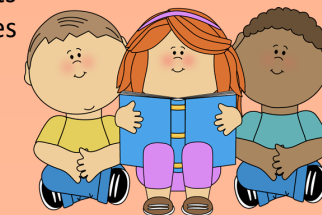
Reading

At St Martin & St Marys we have a first class phonics and reading programme called



Validated by
Department
for Education

'Anima Phonics'. Anima phonics teaches the letter sounds in an enjoyable, multi-sensory way and enables children to use them to read and write words. Each letter sound has its own character and rhyme. Parents can learn more about this in the Autumn term when a phonics meeting for the parents is held. To support the children, school will send home weekly phonics updates and homework so parents can help consolidate their learning at home. Throughout the school day children have numerous opportunities to read. They are involved in shared class reading and writing and in guided reading and writing sessions with their teacher working in small groups, reading books of graded difficulty matched to their independent reading levels. Children have the opportunity to experience a wide variety of texts including fiction, non-fiction, poetry, traditional tales and instructional texts.



Mathematics

We use a 'Mastery' approach to Mathematics. Maths mastery is a teaching and learning approach that aims for pupils to develop deep understanding of maths rather than being able to memorise key procedures or resort to rote learning (e.g counting 1,2,3...)

Much like the phonics, school will send home little maths activities each week to consolidate the learning we have done in school.

