



Meet the teacher presentation  
2025/ 2026



## St Martin & St Mary School Vision

As a Christian school, St Martin and St Mary is an **inclusive** and **happy** community; nurturing **confidence**, a thirst for **learning** and **resilience** in a **safe, loving** environment.

Our priority is developing the whole child **spiritually**, **emotionally**, **physically** and **academically** to **live the most rewarding life**.

‘Life in all its fullness’ John 10.10

**Friendship**

**Love**

**Forgiveness**

**Trust**

**Honesty**

**Faith**



# Contents

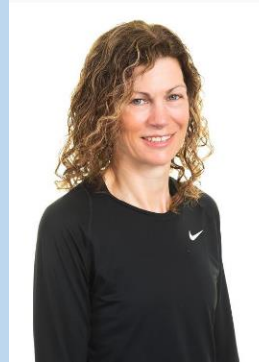


- Our teaching team
- Special Educational Needs Co-ordinator – if you have concerns – class teacher and our SENDCo Lisa Brockbank
- School uniform, stationery and PE
- PTA – can you help?
- Swimming
- Curriculum
- Homework
- Timetable – PE days, expectations
- Trips and Visits – any returns/cash in named envelopes but would rather SCOPAY
- Statutory Assessments –Y1 Phonics Check,
- After School Clubs
- Healthy snacks in school
- School meals – meal choices, payment
- Absence – avoid this at all costs, apply using form on website, ‘exceptional circumstances’
- Please check our Website, School Calendar and Facebook – consent forms, key information
- Contacting teachers – email but in working hours please. 8.30 – 4.30 Monday to Friday

# Key Stage 1 Teaching Team



- Mrs Kath Savage
- Mrs Kimberley Jessop
- Miss Emily Lang
- Mrs Chloe Fox
- Miss Lauren Aspinwall
- Miss Kirsty Galloway
- Mrs Sarah Clarke
- Miss Lucy Dobson
- Mrs Carol Bainbridge



# Special Educational Needs

At St Martin and St Mary Church of England Primary School we want every child to *be the best that they can be* and *live life in all its fullness*. We aim to recognise the individual needs of all pupils and give each of them access to an exciting and engaging curriculum and brilliant teaching and learning. Children need every opportunity to achieve their maximum potential.

If you have any worries about your child, their learning, development, health or behaviour, please talk to your child's class teacher. You may also want to talk with our SENDCO: Mrs Lisa Brockbank. You can contact Lisa through your child's class teacher or the school office.



# School Uniform and PE



## Key Stage 1 – Years 1 & 2

- Black school shoes with Velcro fastenings
- Wellies for Year 1
- Warm waterproof coat
- Trousers/shorts/skirts either black, navy or grey
- White or light blue polo shirt
- Navy blue sweatshirt
- Book bag (available from school)
- Water bottle
- Lunch box and lunchtime drink if not having a school dinner.

## New for September 2023 - PE and Games Kit

Children to attend school in their PE kit on PE and Games days.

### Essential items

- ✓ Trainers
- ✓ Navy or black shorts, a skirt or leggings.
- ✓ A T-shirt in their house colour

*N.B. We expect all children to wear our agreed school uniform for **PE and Games**. Please don't send children to school in Football Kits and 'Active Wear', aerobics outfits etc.*

### Optional extras...

- ✓ Polo shirt
- ✓ Tracksuit - tops and bottoms
- ✓ Hoodie in house team colours
- ✓ Running vest
- ✓ Sports socks
- ✓ Waterproof sports jacket
- ✓ Navy leotard
- ✓ Black gym shorts

The above kit will be worn at school competition & sports festivals.

Items of uniform including PE, swimming kit and book bags must be clearly labelled with the child's name.

Skiddaw – Green    Great Gable – Red    Bowfell – Blue    Helvellyn – Yellow

Our uniform suppliers, Coniston Corporate and Identity, both have an online shop to buy uniform from directly. Deliveries will be sent to school and distributed to your children unless you arrange otherwise.

# PTA



All parents and teachers are members of the PTA. The committee meet on a regular basis, once a term on various times and days and are always looking for new members.

Please contact **Amy Thompson** for more information.

We appreciate any time that you can give us, however small. Over the past two-three years the PTA has

grown from strength to strength. If you are able to help please feel free to come to our next meeting and share with us your ideas and thoughts.

We look forward to seeing you.



# Swimming

Our School pool was originally built using community funds and has been on the school site since 1969 and many local people have fond memories of learning to swim here.

The swimming pool has been an integral part of school life and literally thousands of local children have learned this essential skill in our pool.

The pool is used for private lessons and for school swimming sessions by a number of other local schools.

Children at St Martin and St Mary's start their swimming journey as young as 5 when they are in our reception class and swim every year until they leave for Secondary school.



# Curriculum



The curriculum is carefully designed to fulfil the statutory requirements of the National Curriculum and The Early Years Foundation Stage curriculum but goes way beyond those requirements to provide children with a childhood primary school journey that enables them to ***be the best that they can be***. It is led and implemented by the class teachers who work together as a team, drawing upon each other's specialist subject knowledge, to plan and implement high quality teaching and learning experiences.

# A day in Key Stage 1

8.45am	8.55am	9-9.20am	9.20- 10:10am	10:10- 10:30am	10:30-10.50am	11-12
Doors Open	Doors Close	Register & Phonics	Maths	Worship time	Break Time	English
All children at top door for drop off		Mixed across Y1 and Y2	In Year group (Reception) classes	Reception/ KS1 together or whole school	Whole School	In classes

12-1pm	1:10-2.15pm	2.15-2.30pm	2.30-3pm	3-3.20pm
Lunch	Range of different subjects	Break Time	Range of subjects	Home time ready/ story time/ pick up
Whole School	Mixture of in whole KS1/ Year groups/ classes	Reception & KS1	Mixture of in whole KS1/ Year groups/ classes	Y1/2LF- Classroom door Y1/2SJ- Classroom door Y1/2A- Top corridor door

# Outdoor Learning



Our Key Stage 1 outdoor classroom area is used throughout the year for both focused learning tasks (led by adults or independent) and continuous provision activities available for children access independently.

We also have a full forest schools type curriculum. These activities generally take place on a Friday afternoon.

Wellies need to be kept in school and a waterproof coat is essential.



# Homework

We encourage our children to read a couple of pages from a book at least 4 times a week.

We will send spellings and a math's activity home weekly.



**Words of the Week Unit 6 Week 1** Name: \_\_\_\_\_

**Revision Words**

Read	Copy	Count
come		3
care		
share		

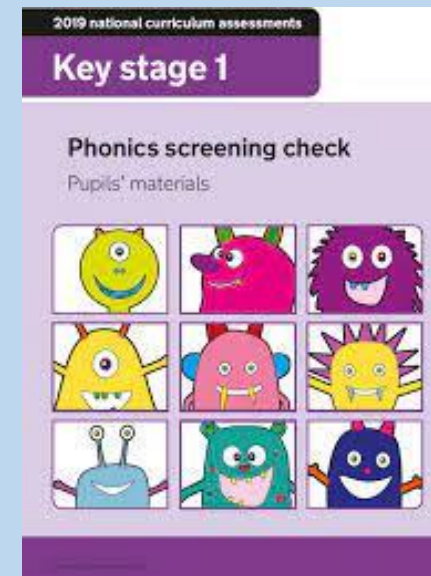
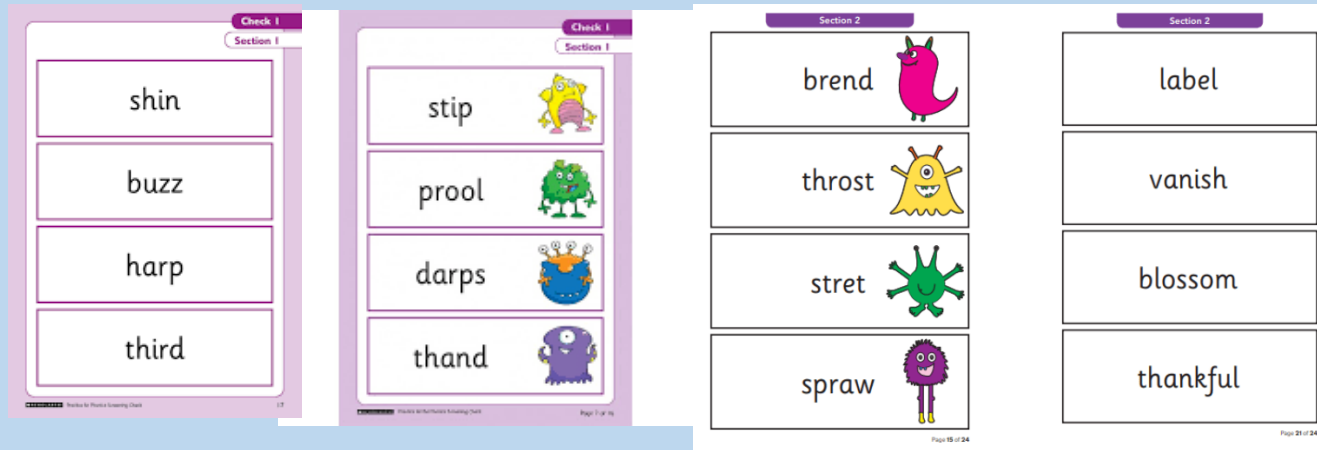
**Words of the Week**

Read	Copy	Count
bear		
pear		
wear		
swear		
tear		
chair		
air		
because		

- 1** Read each word aloud.
- 2** Write the word, sounding out the phonemes.
- 3** Count the sounds in each word. Write the number in the box.
- 4** Practise using these words in a sentence.
- 5** Turn over this page and practise writing the words.



# Year 1 Phonics Screening Check



In **June** all year 1 children will do the Phonics Screening check.

- 20 real and 20 alien words to decode.
- Pass rate has always been 32.
- We do lots of practice games/activities/papers, so the children are not aware it is a test.
- We will ask for support at home with phonics practice.
- Consistency and little and often will be key.

# Timetable



- Homework and spellings will be sent out on a Friday to be returned the following Thursday.
- Each class will visit the library regularly.
- Spelling Test is on a Friday.
- PE days will be Monday and Wednesday.



# School Opening Times.



	Key Stage 2 (Years 3, 4, 5 and 6)	Key Stage 1 (Years 1 and 2) and Reception	Pre-School and Nursery
Doors Open	8.40am	8.45am	
Learning Starts	8.45am	8.50am	9.00am
Registers Close	9.00am		
School Day Finishes	3.15pm	3.20pm	3.15pm
Total time in school	6hrs 30mins	6hrs 30mins	6hrs

# Wrap around care



## **BREAKFAST CLUB**

8.00am – 8.40am Quiet activities based in the library. Delivery to your class at appropriate time. Please bring everything you will need for your school day.

## **MORNING CLUB**

8.00am-8.40am Quiet Activities based in YRS

## **AFTERSCHOOL CLUB**

3.20pm - 5.30pm Collection from your schools & classes Lots of fun activities based both in the library, the sports hall & outdoor play areas.

## **AFTERSCHOOL CLUB**

3.20pm - 5.30pm Collection from your classes. Lots of fun activities based in Pre-School

# School Meals



We offer a wide range of delicious meals at lunchtime, including hot cooked options and salads. Free meals are provided for all children in Reception, Year 1 and Year 2. Dolce is able to cater for allergies, please contact school to discuss your child's individual needs.

## **Free School Meals**

Families in receipt of certain benefits may be entitled to a free school meal. Please also see the pupil premium information. The claim for is available from the school office. It needs returning to the school office.

## **Packed Lunches**

Parents may choose to send their child to school with a packed lunch. Our school promotes healthy eating so no sweets, chocolate or fizzy drinks are allowed.

## **Drinks and Snacks**

The Early Years and Key Stage 1 children are provided with a piece of fruit at each morning break. Children can buy toast for 25p.

Children are given the opportunity to drink water throughout the day. We encourage children to bring a bottle of water, marked with their name, which they can refill at school should they need to.

# Absences

Parents have a legal duty to ensure that their children attend school regularly and arrive on time. It is the parents' responsibility to contact the school on the first day their child is absent and only the Headteacher can authorise absence for approved reasons.

These include:

- Occasional sickness
- Pre-arranged appointments

## **Unauthorised Absence**

Absences will be unauthorised for things such as:

- Persistent non-specific illness
- Absence of siblings if one child is unwell
- Oversleeping
- Confusion over school dates
- Medical/dental appointments of more than half a day without good reason
- Child's/family birthday
- Shopping trip

## **Holidays**

Holidays during term time will not be authorised and will be recorded as an unauthorised absence on your child's record.



# Contact Details



Please check our Website, School Calendar and Facebook for all key information

Email but in working hours please. 8.30 – 4.30 Monday to Friday

[ksavage@windermere.cumbria.sch.uk](mailto:ksavage@windermere.cumbria.sch.uk)

[kjessop@windermere.cumbria.sch.uk](mailto:kjessop@windermere.cumbria.sch.uk)

[elang@windermere.cumbria.sch.uk](mailto:elang@windermere.cumbria.sch.uk)

[cfox@windermere.cumbria.sch.uk](mailto:cfox@windermere.cumbria.sch.uk)

[laspinwall@windermere.cumbria.sch.uk](mailto:laspinwall@windermere.cumbria.sch.uk)